



Low Frequency WheelProbe



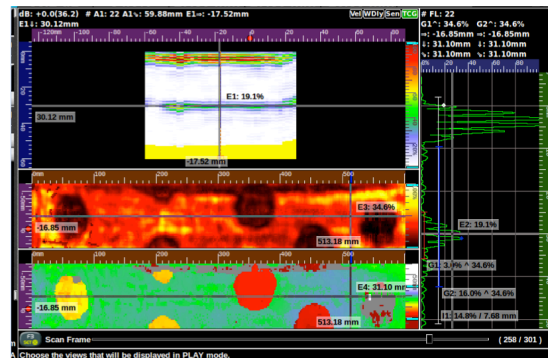
Simplicity | Capability | Reliability

The Sonatest Low Frequency WheelProbe is a development that extends our existing range of array wheel probes and is designed for the inspection of thick attenuative composite materials such as Glass Reinforced Plastic. As with the existing probes, it is designed to couple to suitable inspection surfaces with a minimal amount of couplant.

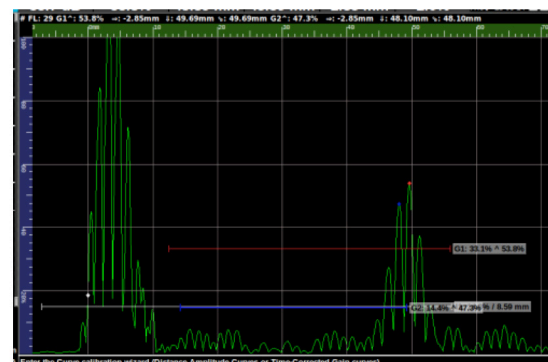
Features

- Large Format array system for Composite Inspection.
- 500kHz or 1MHz (option) with 16mm (5/8 inch) virtual aperture.
- Inspect GFRP (Glass Fibre Reinforced Plastic) Up to 110mm thick (assumed sound velocity 3000ms⁻¹)
- Requires minimal coupling – typically a light water misting will be sufficient.
- Adjustable for concave and convex surfaces.
- Available with IPEX< Cannon or Hypertronics connectors.
- Usable with Sonatest VEO series, Rapidscan series, Prisma and other phased array instruments.
- Lightweight construction (5.2kg) for manual use.
- Integral push-buttons for instrument control.
- Patented polymer wheel – minimises internal reflections and maximises resolution.
- >30 cm/s scan rate with Sonatest VEO series.

Specifications (Subject to change)	
Scan Width	85mm (approx)
Array Dimensions	50 element 2mm pitch 16mm elevation
Frequencies	0.5 MHz, 1.0 MHz
Overall Dimensions	280mm (w) x 260mm (d) 200mm (h)
Weight (excluding cable)	5.2kg
Connectivity	
Maximum Cable Length	5m(standard) up to 20m
Cannon ITT Connector (Rapidscan series)	•
IPEX Connector (Veo/Prisma series)	•
Typical Applications	
Wind & Tidal Energy Turbine Blades	•
Composite Marine Structures	•
Composite Engineered Structures eg Bridge Decks, delamination detection of Bonded Plastic to Steel interfaces	•



0.5 MHz probe – results on glass/carbon structure sample. – Image from VEO



0.5 MHz probe – A-Scan results on 45mm Glass Fibre sample – Image from VEO

Distributed by:

Sonatest (Head Office)
Dickens Road, Old Wolverton
Milton Keynes, MK12 5QQ
t: +44 (0)1908 316345
e: sales@sonatest.com

Sonatest (North America)
12775 Cogburn, San Antonio
Texas, 78249
t: +1 (210) 697-0335
e: sales@sonatestinc.com